

# FOR SALE or LEASE

## Retail / Showroom/ Office

3218 West Hwy. 98, Panama City, Florida



- Availability:** 3,216 Square Feet Available
- Location:** 3218 W Highway 98, Panama City, Florida. Just East of Michigan Avenue
- Zoning:** General Commercial 2 Panama City, FL\*  
\* Special Overlay District
- Additional:** 1.157 Acres +/- (.848 Acres directly behind property included in sale only)
- Lease Rate:** \$3,500 per month NNN
- Sale Price:** \$750,000



**SIOR**<sup>®</sup>

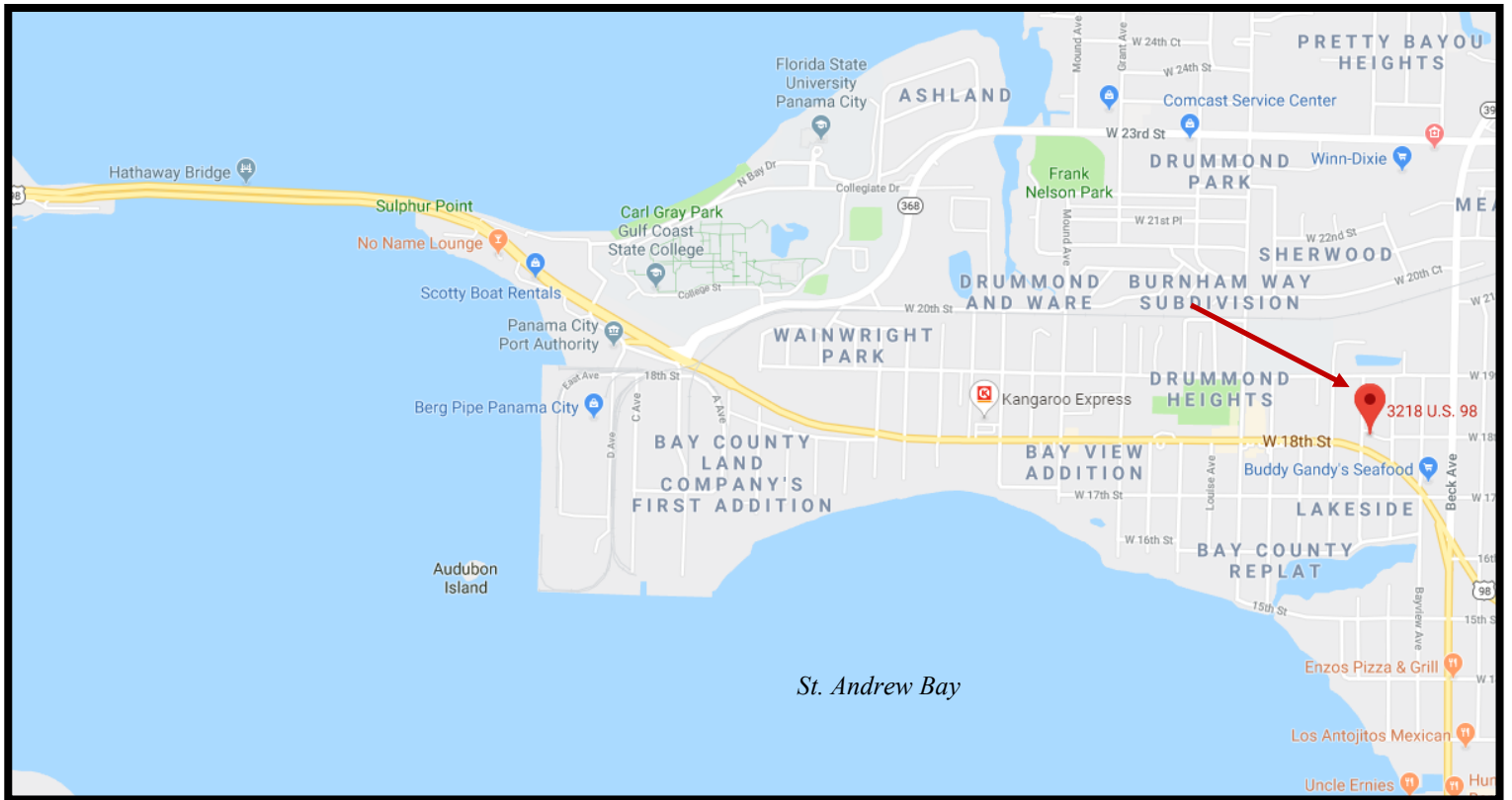
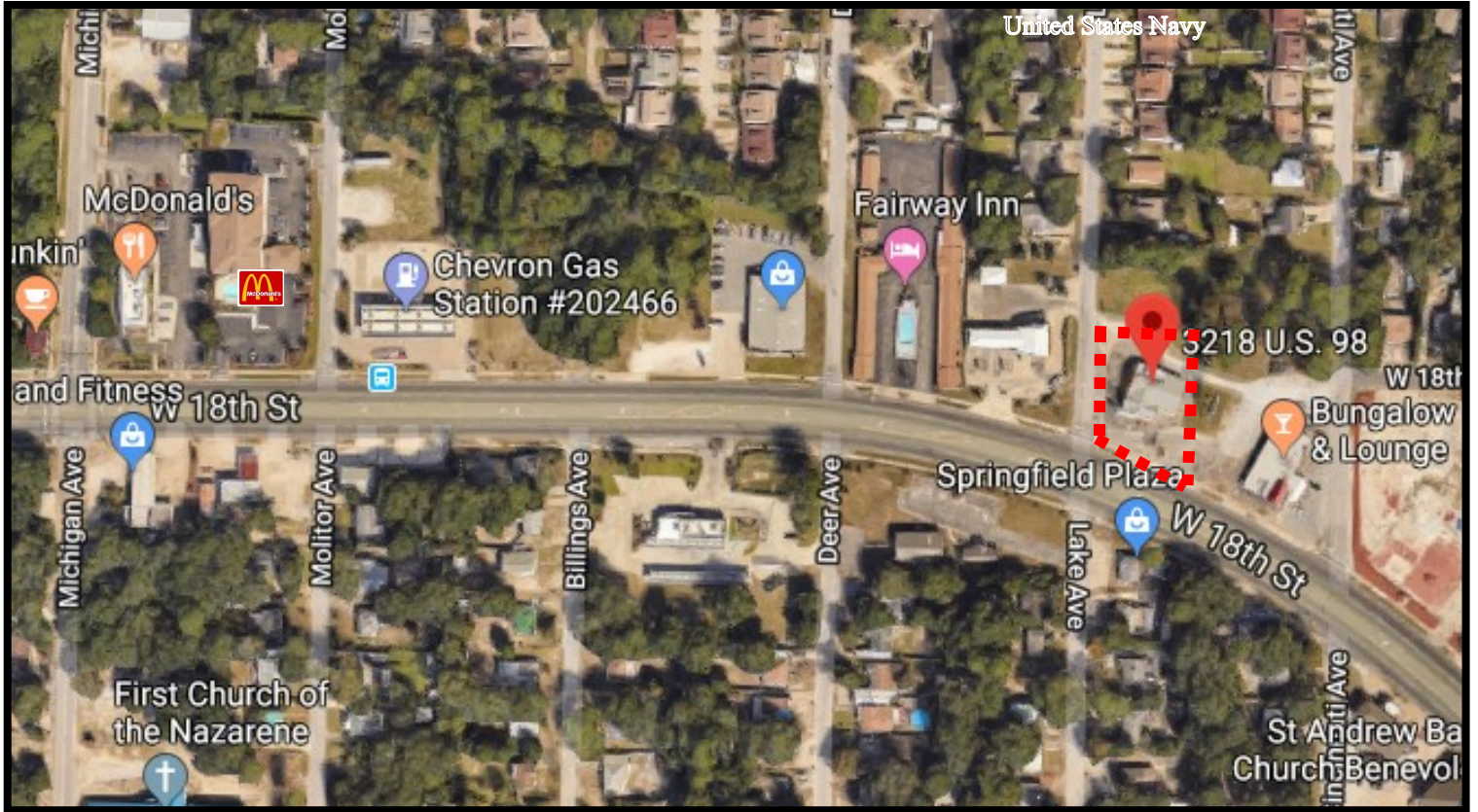
INDUSTRIAL & OFFICE  
SPECIALIST

[www.CountsCommercial.com](http://www.CountsCommercial.com)

**Chris McCall, SIOR**  
Senior Director/Partner  
850.814.9889  
[Chris1@CountsRealEstate.com](mailto:Chris1@CountsRealEstate.com)



**Daniel Dunnivant** 727-512-9742  
[Daniel@CountsRealEstate.com](mailto:Daniel@CountsRealEstate.com)



[www.CountsCommercial.com](http://www.CountsCommercial.com)

INFORMATION IS BELIEVED TO BE ACCURATE BUT IS NOT WARRANTED OR GUARANTEED AND SHOULD BE INDEPENDANTLY VERIFIED.