

80 Acres U.S. Highway 231

Adjacent To Port Intermodal Distribution Center

Panama City, Bay County, Florida



Acreage: 80 Acres

Frontage: +/- 3,500 Feet

Zoning: AG -1, Unincorporated Bay County

Sale Price: \$900,000
(\$11,250 per acre)

Location: East side of U.S. Highway 231, approximately 9 miles North of Panama City. The property is just 1.2 miles North of Commerce Blvd. and 36 miles South of I-10.

Highlights:

- ◆ Adjacent to Port Intermodal Distribution Center
- ◆ With land use change and incorporation into Panama City limits, property would make ideal commercial or industrial site.
- ◆ Rail service available
- ◆ 445 Acre parcel for sale on the north side of U.S. 231



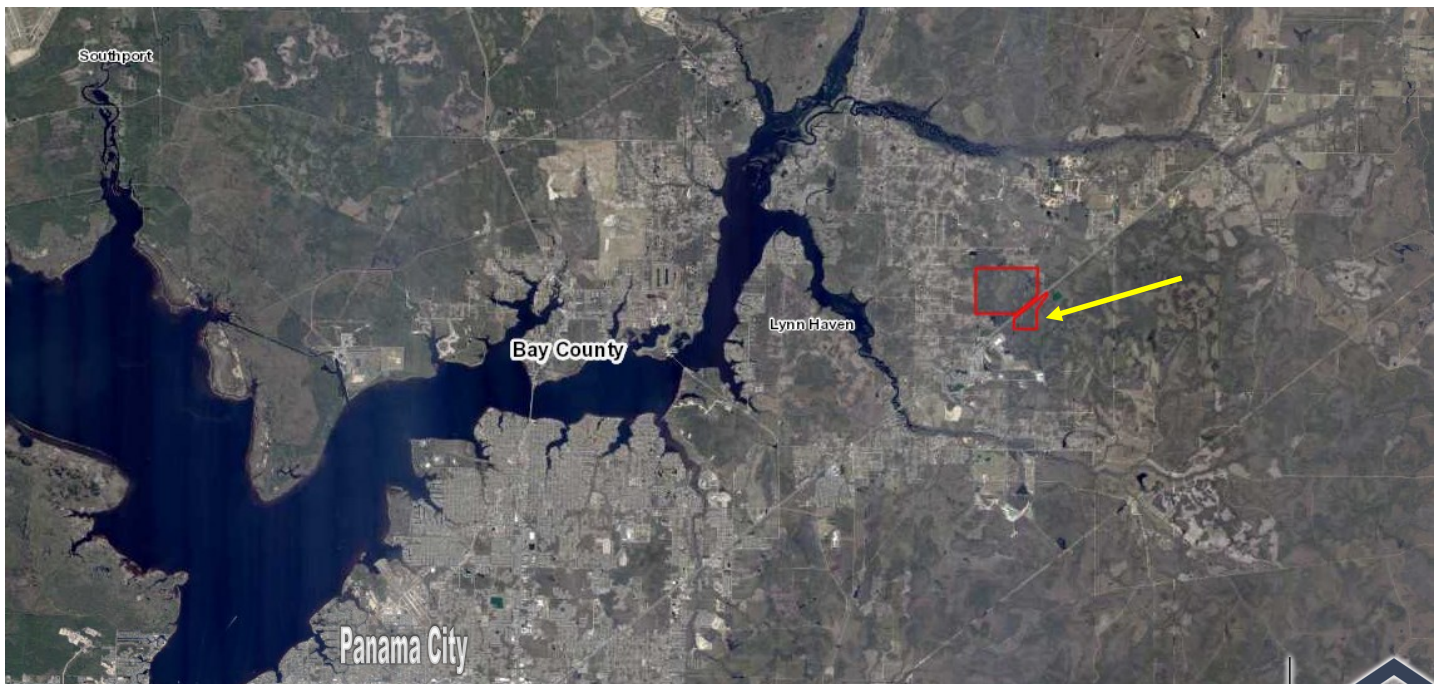
SIOR[®]

INDUSTRIAL & OFFICE
SPECIALIST

Dan Dunnivant 727.512.9742
Daniel@CountsRealEstate.com

Chris McCall, SIOR
Senior Director/Partner
850.814.9889
Chris1@CountsRealEstate.com

80 Acre & 445 Acre Sites, U.S. Highway 231, Panama



Chris McCall
Cell: 850.814.9889

Daniel Dunnivant
727-512-9742

